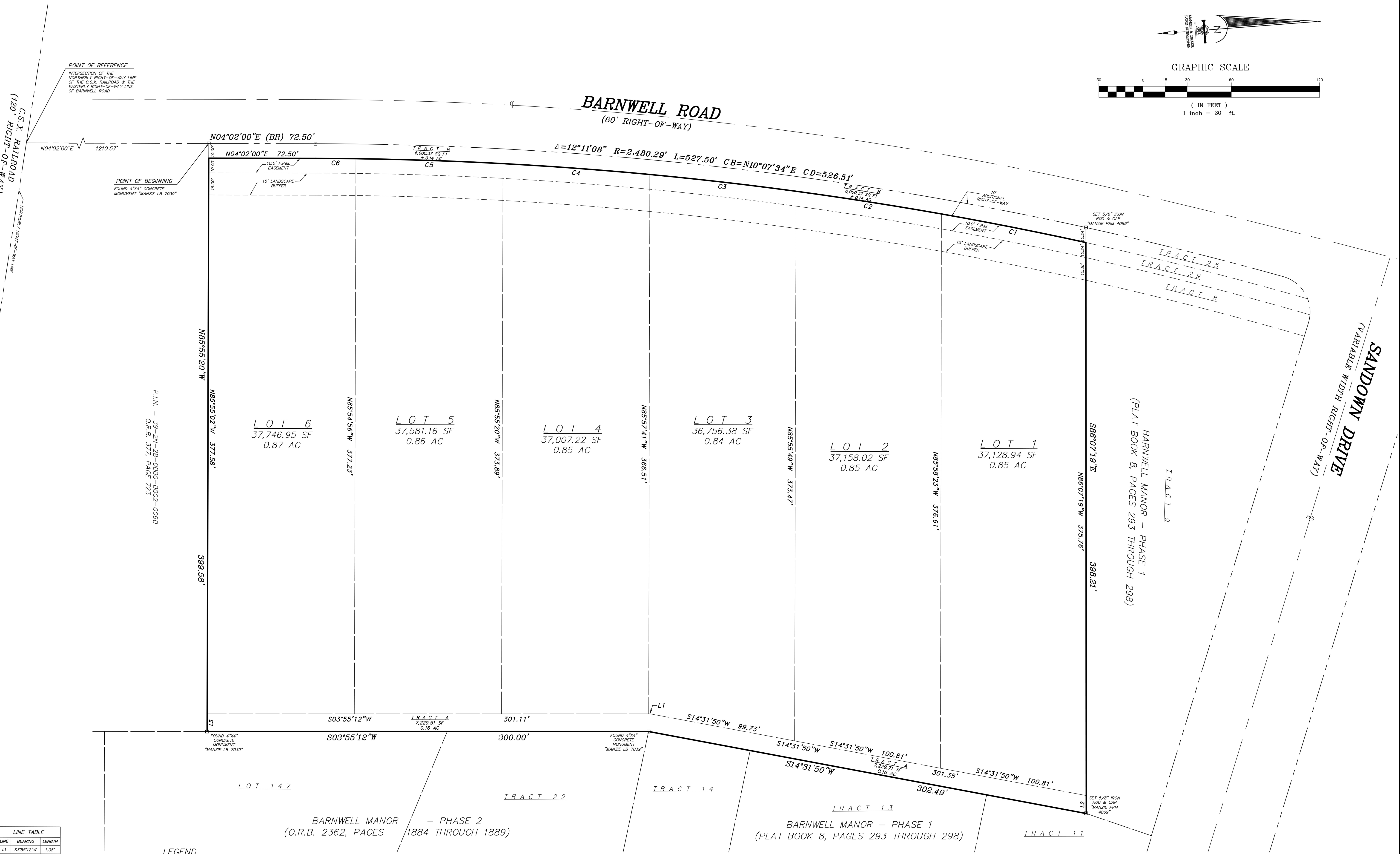
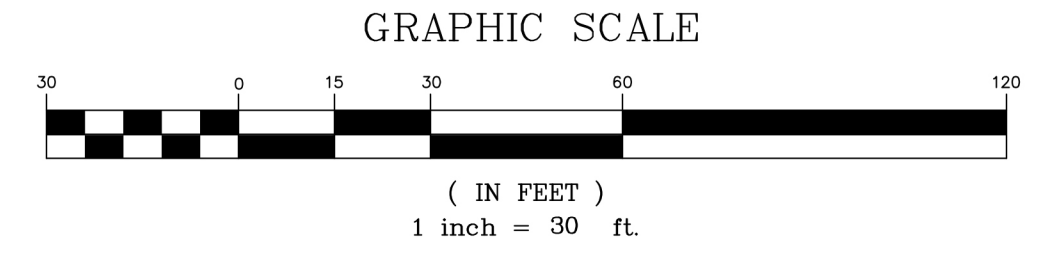
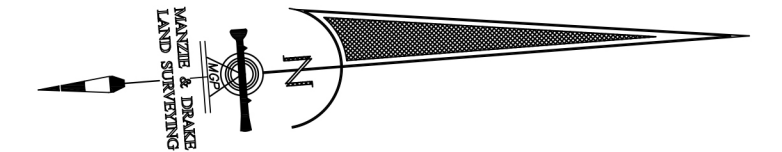


KINGSLEY ESTATES

A PORTION OF SECTION 39, TOWNSHIP 2 NORTH, RANGE 28 EAST, NASSAU COUNTY, FLORIDA



P.I.N. = 39-2N-28-0000-0002-0060
O.R.B. 377, PAGE 123

LINE	BEARING	LENGTH
L1	S3°55'12"W	1.08'
L2	N86°07'19"W	12.21'
L3	N85°55'20"W	12.00'

CURVE	LENGTH	RADIUS	DELTA	CHORD BEARING	CHORD DISTANCE
C1	100.02'	2,470.29'	2°19'11"	N15°06'35"E	100.01'
C2	100.02'	2,470.29'	2°19'11"	N12°47'24"E	100.01'
C3	100.01'	2,470.29'	2°19'11"	N10°28'13"E	100.01'
C4	100.01'	2,470.29'	2°19'11"	N8°09'02"E	100.00'
C5	100.01'	2,470.29'	2°19'11"	N5°49'51"E	100.00'
C6	27.50'	2,470.29'	0°38'16"	N4°21'08"E	27.50'

LEGEND
 P.L.S. = PROFESSIONAL LAND SURVEYOR
 P.I.N. = PARCEL IDENTIFICATION NUMBER
 LB = LICENSED BUSINESS
 SQ. FT = SQUARE FEET
 N.A.V.D. = NORTH AMERICAN VERTICAL DATUM
 F.P.&L. = FLORIDA POWER & LIGHT EASEMENT
 AC = ACRE
 C = CENTERLINE
 Δ = CENTRAL ANGLE
 CB = CHORD BEARING
 CD = CHORD DISTANCE
 L = LENGTH
 R = RADIUS
 P.I.N. = PARCEL IDENTIFICATION NUMBER
 O.R.B. = OFFICIAL RECORDS BOOK

MANZIE & DRAKE LAND SURVEYING
 117 South Ninth Street, Fernandina Beach, FL 32034
 (904) 491-5700 www.ManzieAndDrake.com
 Certificate of Authorization Number "LB 7039"
 "OUR SIGHTS ARE ON THE FUTURE,
 SET YOUR SITES ON US."
\\Computer1\c:\CWS 3D Projects\16900 BARNWELL\16900-PLAT.dwg